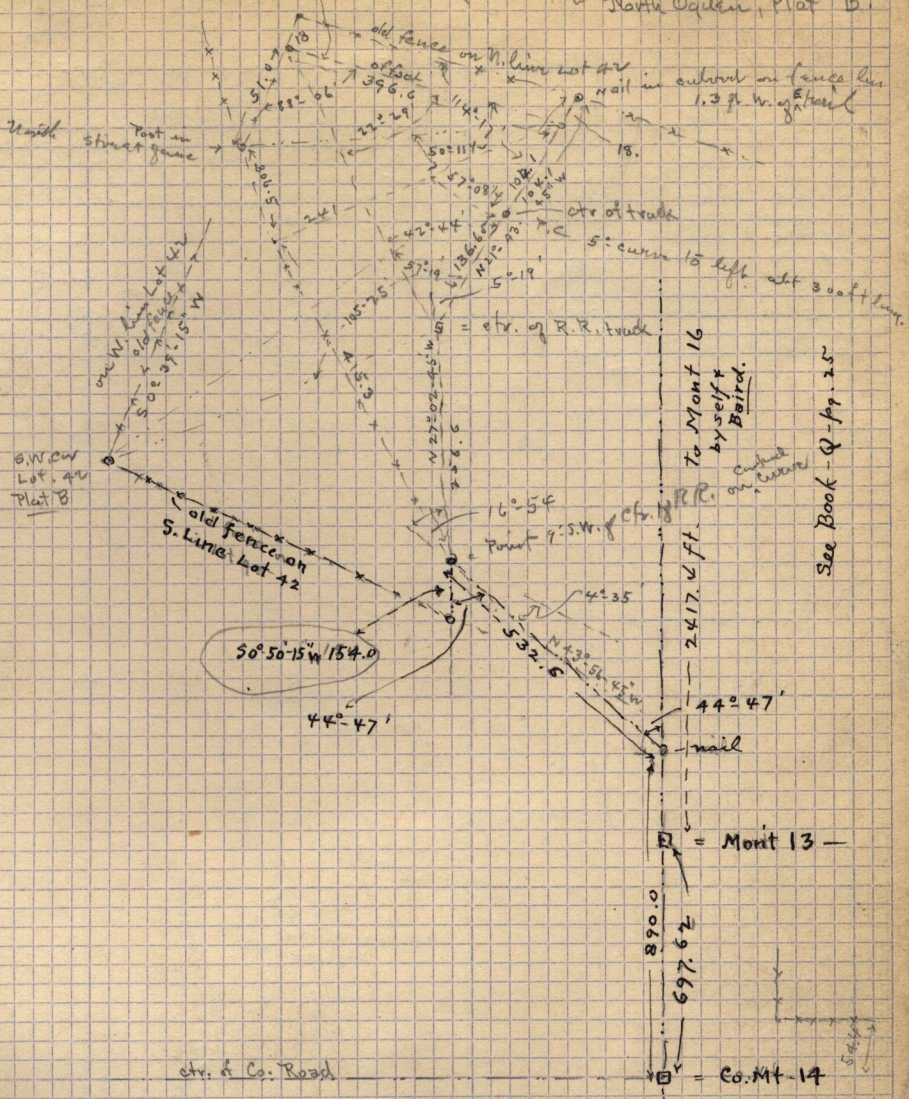


Aug 10-1916

157

N 87° 26' 45" W

Survey for Amalgamated Sugar Co. of North Dallen, Plat B



See Field Book  
O - page 100

Ties to Co. Mt. No 14 -  
 N 76° 50' E <sup>40.6'</sup> to Elect. pole 1624  
 N 75° 45' W 44.35 total. pole  
 W. 10. ft. to E. rail  
 N 16° 29' 1/2" E 256.4 ft. to S.W. Cor. Brick Store  
 N. W. 116.2 ft. to S.W. cor. Brick Res.

ctr. Washington Av.  
 N. 0° 50' 15" E  
 (True course)

See Book Q - pp. 25